

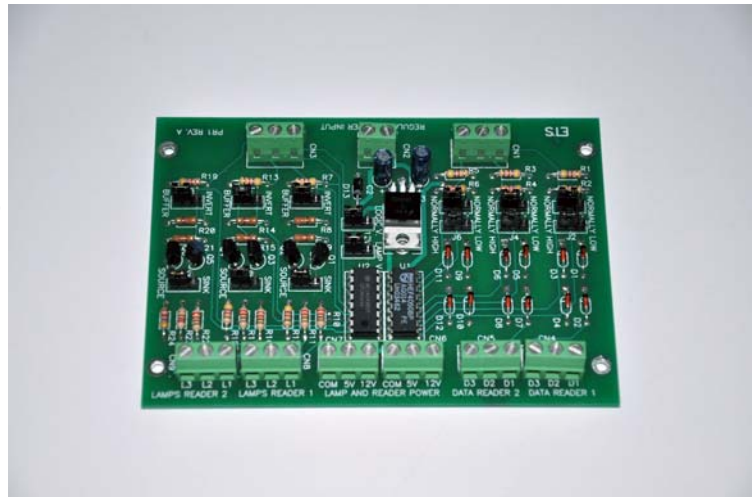
ETS

Electronic Technical Services Inc.
211 Conchas SE
Albuquerque, NM 87123
PH 505-888-3923 FAX 505-888-3926
Website: www.etsnm.com

PR1 Parallel reader interface

Description

Allows two access control card readers (Wiegand or Magstripe) to be connected to a single reader input. Useful for saving reader ports on access control panels and / or doors that require card readers on both sides .



Includes

- PR1 Parallel reader interface board
- Installation instructions

Warranty 1 year parts and labor.

Made in USA

PR1 Features and Specifications

- 2 LED drivers for each reader.
- Buffered reader data output.
- Jumper configurable for any reader type.
- Easy cable run terminations.
- Power: 12VDC @ 10mA.
- 5v regulator for reader power
- Reverse polarity protected
- Dimensions: W 3.40 x L 4.80